

Welcome To Marketing Mail Master (MMM) Help

Marketing Mail Master :: Introduction

MMM is an email utility that lets you send anonymous emails from any email address to any email address. Some marketing specialists don't like sending a mail to a lot of recipients all at once. Instead of you can send one mail to one recipient with this e-mail tool. You needn't be an smtp provider (or your internet provider is VODAFONE - no smtp server). It contains a built-in, a simplest, easy to use SMTP mail relay server. It is used for relaying your email messages to its destinations quickly and easily.

Here are the major features of Marketing Mail Master:

- Relay your messages, directly to destinations.
- Remote access, use the server to send email from anywhere .
- Minimizes to taskbar. Since you don't have to follow the status of the server, when you minimize the main window, it will be hidden in the small taskbar icon.
- If you set SMTP server, it supports TLS and SSL authentication
- Mail direct works with most e-mail programs, such as Outlook Express, The Bat, Eudora and many more. It has a built-in SMTP server, which your e-mail client will use to send messages. It receives the messages from your client and then sends them directly to your recipient's mail server, bypassing your ISP's mail server.

Send anonymous e-mail: this service is perfect for the following:

- catch a cheating spouse husband or wife.
- find out if your friend is are real friend
- give warnings to people
- inform the police about illegal activities
- when your own email service doesn't work
- and many more reasons...

Disclaimer: MMM server side IS NOT A TOOL FOR SPAMMING. We do not support spammers and strictly forbid anyone to use MMM server side for sending unsolicited spam email. By downloading the program, you agree to use it legally.

Menu structure

File menu

Send messages
Start to send messages.

Abort sending
If you start to send messages, you could stop this thread.

Show server files
If you start built-in smtp server, you can select another server file again.

Show in system tray
Minimizes to taskbar, it will be hidden in the small taskbar icon.

Exit
Exit from the program.

About menu

Help
Show this help file.

About

Donate
Donate this product

Minimum system requirements:

Before you download software, please check if your computer meets the minimum system requirements!

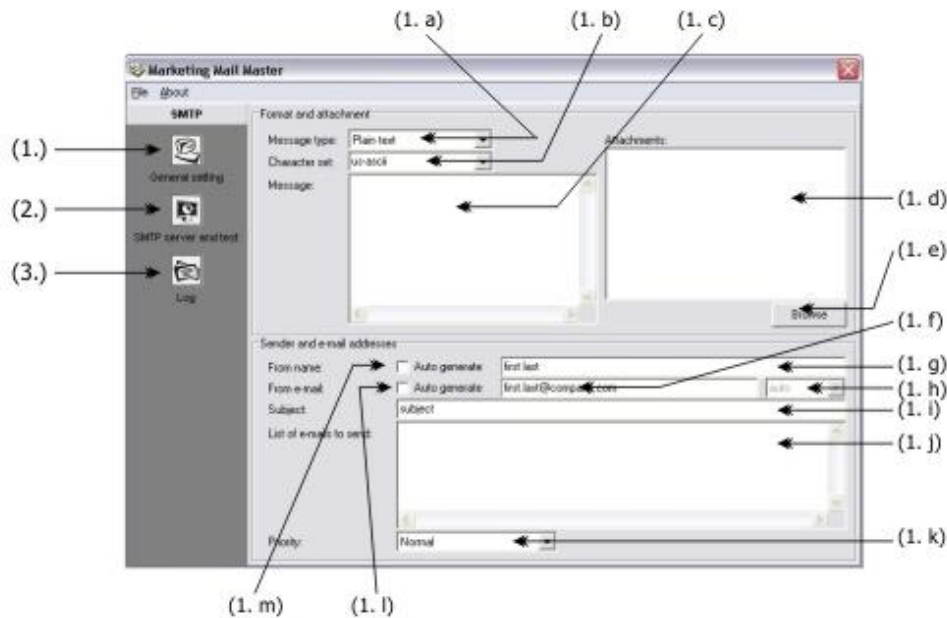
Microsoft® Windows 98/98SE, Windows ME, Windows 2000, Windows XP, Windows 2003 Server

- 200 MHz Pentium II processor or equivalent
- 64 MB RAM
- 5 MB hard disc space for install

Marketing Mail Master :: Program details

- (1.) General Settings: This is the main modul of program, you can send marketing or anonymous emails to any recipient.
- (2.) SMTP server and test: You could set smtp server or select a list.
- (3.) Log: Display logging information.

Marketing Mail Master :: General Settings



(1.a) Message type:

Set message type: If you choose plain text you can write any text for the email message (see 1.c). Or you add file (for example html) to click the 'Browse' button.

(1.b) Character set:

Set characters type for example utf-8 to webmail specific. Default is us-ascii.

Here you are some character sets:

big5	Chinese Traditional (Big5)
eur-kr	Korean (EUC)
iso-8859-1	Western Alphabet
iso-8859-2	Central European Alphabet (ISO)
iso-8859-3	Latin 3 Alphabet (ISO)
iso-8859-4	Baltic Alphabet (ISO)
iso-8859-5	Cyrillic Alphabet (ISO)
iso-8859-6	Arabic Alphabet (ISO)
iso-8859-7	Greek Alphabet (ISO)
iso-8859-8	Hebrew Alphabet (ISO)
koi8-r	Cyrillic Alphabet (KOI8-R)
shift-jis	Japanese (Shift-JIS)
x-enc	Japanese (EUC)
utf-8	Universal Alphabet (UTF-8)

windows-1250	Central European Alphabet (Windows)
windows-1251	Cyrillic Alphabet (Windows)
windows-1252	Western Alphabet (Windows)
windows-1253	Greek Alphabet (Windows)
windows-1254	Turkish Alphabet
windows-1255	Hebrew Alphabet (Windows)
windows-1256	Arabic Alphabet (Windows)
windows-1257	Baltic Alphabet (Windows)
windows-1258	Vietnamese Alphabet (Windows)
windows-874	Thai (Windows)

(1.c) Message: The email body text. Enter any text you like for the email message.

(1.d) Attachments:

Attach one or more files to email. To add file attachments to the list click the 'Browse' button or press 'Insert' key. To remove a file attachment from the list to select an item and then push the 'Delete' key.

(1.e) Browse button:

To add file attachments to the list click the 'Browse' button.

(1.f) From email:

This could be any email address. Friendly name convention in the format name is supported. For example: gary@yahoo.com

(1.g) From name: This could be any name or you can generate.

(1.h) From email domain host:

This will be enabled when you check 'Auto generate from email' checkbox. Default is 'auto' it's mean that auto generate to this from list items. Or you can select or write another value.

(1.i) Subject: This is subject of the mail.

(1.j) List of emails to send:

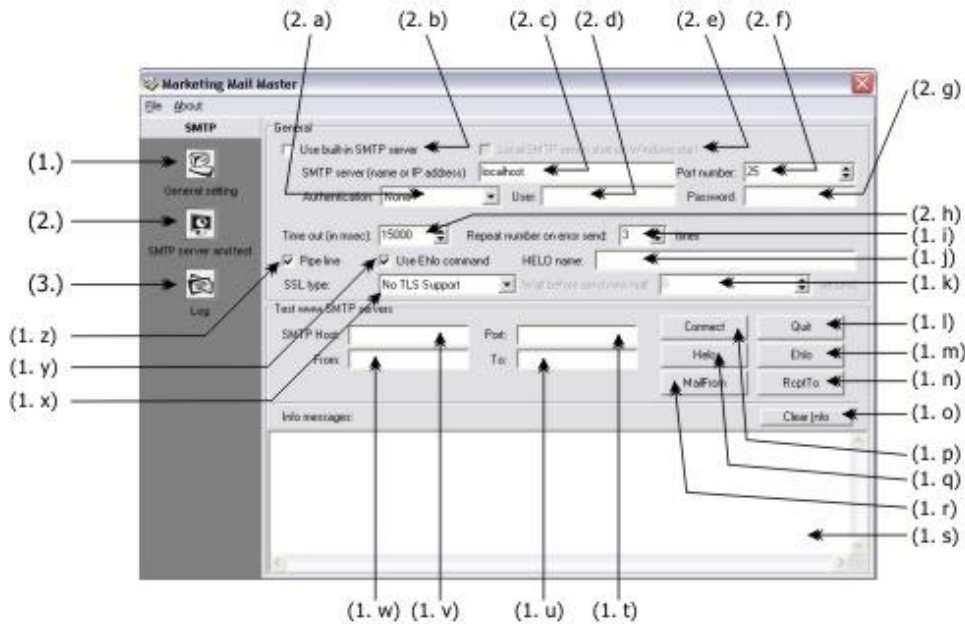
This is recipient's list. One or more valid email addresses, separated by ';' or ','. For example: jane@hotmail.com; Jerry Lane <jl@yahoo.com> or jane@hotmail.com, jl@yahoo.com.

(1.k) Priority: Mail priority.

(1.l) Auto generate from email: Auto generate this value. TAKE IT EASY!

(1.m) Auto generate from name: Auto generate this value.

Marketing Mail Master :: SMTP server and test



(2.a) Authentication: If your SMTP server waits an auth method, just select it.

(2.b) Use built-in SMTP server:

You could create a SMTP server what use it anywhere. If you check this you can be select a following server types:

1. Relay server (the most recommended): (relay server.smt)

MMM will search your ISP's IP address. This server would usually accept any email for an address under their domain. (Perhaps so perhaps not it sends messages, return notification always true.)

2. MX lookup (recommended): (mx lookup.smt)

MMM will search the web NS servers of the recipient domain. These servers would usually accept any email for an address under their domain. DNS is a "Domain Name" Server on the Internet that translate a domain name such as www.yahoo.com to an IP address. Usually DNS IP addresses are provided by your ISP. You can find them in your network configuration settings under properties for TCP/IP.

3. WHOIS lookup: (whois lookup.smt)

This searches on net with WHOIS lookup servers.

4. Own smtp server: (gmailconn.smt)

I created a gmail email address to test the application and set up to SMTP server. It 's trouble that you set email in (1.f), it's rewrote by gmail server.

If the search fails, make sure the 'To:' address contains a valid domain name. (for example abc@hotmail.com is valid because hotmail.com is a valid domain but abc@hotmailiww.com is not valid because the domain hotmaiww.com does not exist).

(2.c) SMTP server name:

An SMTP server is a server on the web that is used by email applications (like Microsoft Outlook) to send emails thru in the Simple Mail Transport Protocol. Usually one would use the SMTP server of his/her ISP (Internet Service Provider).

(2.d) User: In authentication (2.a) method you can set username.

(2.e) Local SMTP start on windows start:

This will be enabled when you check 'Use built-in SMTP server' checkbox. This application will be start automatically when windows operating system starts.

(2.f) Port number: To set your SMTP port number (default: 25) .

(2.g) Password: In authentication (2.a) method you can set user password.

(2.h) Time out: Sending mail to server time out value in millisecond.

(2.i) Repeat number on error : MMM can try to connect and send mails repeat time. You can set this repeat value.

(2.j) HELO name: Send a HELO name syntax to server.

(2.k) Wait before send new mail :

This will be enabled when you check 'Use built-in SMTP server' checkbox. Send mails through SMTP server and sleep sending next mail with this value in seconds.

(2.l) Quit: If you connect a SMTP server you can close the connection.

(2.m) Ehlo: Send an EHLO command to server.

(2.n) RcptTo: Examine the recipient email with server.

(2.o) Clear info: Clear text in 'Info messages' memo.

(2.p) Connect: Connect to SMTP server you must set value in (2.v) and (2.t).

(2.q) Helo: Send a HELO command to server.

(2.r) Mail from: Examine the sender (from) email with server.

(2.s) Info messages: Display a log on connecting server, sending commands, etc.

(2.t) Port: To set your SMTP port number (default: 25).

(2.u) To: This is a recipient email address.

(2.v) SMTP host: An SMTP server is a server on the web that is used by email applications .

(2.w) From: This could be any email address.

(2.x) SSL type:

In the authentication process, a TLS/SSL client sends a message to a TLS/SSL server, and the server responds with the information that the server needs to authenticate itself. The client and server perform an additional exchange of session keys, and the authentication dialog ends. When authentication is completed, SSL -secured communication can begin between the server and the client using the symmetric encryption keys that are established during the authentication process.

Set type to one of the following values:

- No TLS Support - you do not wish to use TLS at all

- Use Implicit TLS - You wish to use implicit TLS. In implicit TLS SMTP, you connect to port 25, start TLS negotiation, and the entire session is encrypted. IETF has depreciated implicit TLS SMTP so this setting should only be used with SMTP servers that do not yet support explicit T LS.

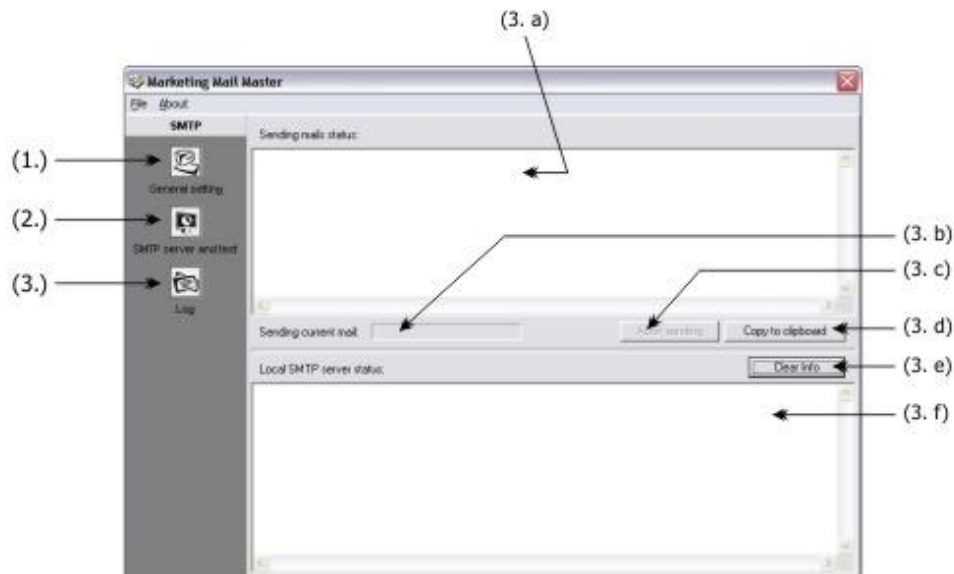
- Use Require TLS - You wish your session to use explicit TLS. In explicit TLS SMTP, you connect to port 25 like the unencrypted version of SMTP, issue a special command (AUTH TLS, AUTH SSL, AUTH TLS-P, or AUTH TLS-C), start TLS negotiation, and encryption lasts until you disconnect or issue the reinitialize command (REIN).

- Use Explicit TLS - You wish your session to use explicit TLS if the SMTP server supports it.

(2.y) Use Ehlo command: Use EHLO command to communicate SMTP server.

(2.z) Pipe line: Copies the complete contents of e-mail messages that are sent from the sender's e-mail address.

Marketing Mail Master :: Log screen



- (3.a) Sending mails status: Here you can see sending status.
- (3.b) Sending current mail: Process all mail sending.
- (3.c) Abort sending: Abort sending procedure.
- (3.d) Copy to clipboard: Copy 'Sending mails status' memo text to clipboard.
- (3.e) Clear info: Clear 'Local SMTP server status' memo
- (3.f) Local SMTP server status: View built-in SMTP server status.

Marketing Mail Master :: Tips and tricks

Please go to our webpage <http://mmm.databasemagic.net/tips.html> to get some information and tips from program.

Marketing Mail Master :: Copyright information

Release 1.0.0 2008. May
Copyright © 2007-2008 Sandor Kovacs. All rights reserved.

kovacs@uw.hu
Irinyi str. 28
H-6000 Kecskemét
Hungary

<http://mmm.databasemagic.net>

Marketing Mail Master is a registered trademark of Sandor Kovacs. It's protected by international copyright law.

Marketing Mail Master :: License Agreement

Software License Agreement

Copyright © 2007-2008 Sandor Kovacs (contact@databasemagic.net)

All Rights Reserved

Important - read carefully:

This End-User License Agreement ("EULA") is a legal agreement between you (either an individual or a single entity) and the mentioned author of this Software for the software product identified above, which includes computer software and may include associated media, printed materials, and "online" or electronic documentation ("SOFTWARE PRODUCT").

By installing, copying, or otherwise using the SOFTWARE PRODUCT, you agree to be bound by the terms of this EULA. If you do not agree to the terms of this EULA, do not install or use the SOFTWARE PRODUCT; you may, however, return it to your place of purchase for a full refund.

SOFTWARE PRODUCT LICENSE

The SOFTWARE PRODUCT is protected by copyright laws and international copyright treaties, as well as other intellectual property laws and treaties. The SOFTWARE PRODUCT is licensed, not sold.

GRANT OF LICENSE.

This EULA grants you the following rights:

Installation and Use. You may install and use an unlimited number of copies of the SOFTWARE PRODUCT, provided that:

- Each copy is licensed from Sandor Kovacs
- Backup copies of software are to be made for archival purposes ONLY, and are not to be used on any other computer system

Reproduction and Distribution. You may reproduce and distribute an unlimited number of copies of the SOFTWARE PRODUCT; provided that each copy shall be a true and complete copy, including all copyright and trademark notices, and shall be accompanied by a copy of this EULA.

DESCRIPTION OF OTHER RIGHTS AND LIMITATIONS.

Limitations on Reverse Engineering, Decompilation, and Disassembly.

You may not reverse engineer, decompile, or disassemble the SOFTWARE PRODUCT, except and only to the extent that such activity is expressly permitted by applicable law notwithstanding this limitation.

Separation of Components.

The SOFTWARE PRODUCT is licensed as a single product. Its component parts may not be separated for use on more than one computer.

Software Transfer.

You may permanently transfer all of your rights under this EULA, provided the recipient agrees to the terms of this EULA.

Termination.

Without prejudice to any other rights, Sandor Kovacs may terminate this EULA if you fail to comply with the terms and conditions of this EULA. In such event, you must destroy all copies of the SOFTWARE PRODUCT and all of its component parts.

LIMITED DISTRIBUTION LICENSE

The SOFTWARE PRODUCT may not be sold or be included in a product or package which intends to receive benefits through the inclusion of the SOFTWARE PRODUCT. The SOFTWARE PRODUCT may be included in any free or non-profit packages or products. Permission is granted to individuals charging no fees, and to BBSes, User Groups, Mail -Order Disk Vendors, CD-ROM publishers, and BBS File-Distribution Networks regardless of fees, to distribute the evaluation version of the SOFTWARE PRODUCT, provided they convey a complete and unaltered copy of the shareware version of this product, and provided they claim no ownership of these products.

Permission to distribute these products is not transferable, assignable, saleable, or franchisable. Each vendor wishing to distribute these products must independently satisfy the terms of this limited distribution license.

RESTRICTIONS.

You MAY NOT: (a) redistribute, loan, rent, sell the SOFTWARE PRODUCT "as is"; (b) use the SOFTWARE PRODUCT to create pornographic, immoral, illegal or defamatory material

COPYRIGHT.

All title and copyrights in and to the SOFTWARE PRODUCT

(including but not limited to any images, photographs, animations, video, audio, music, text, and "apple ts" incorporated into the (SOFTWARE PRODUCT), the accompanying printed materials, and any copies of the SOFTWARE PRODUCT are owned by Sandor Kovacs. The SOFTWARE PRODUCT is protected by copyright laws and international treaty provisions. Therefore, you must treat the SOFTWARE PRODUCT like any other copyrighted material except that you may install the SOFTWARE PRODUCT on a single computer provided you keep the original solely for backup or archival purposes.

MISCELLANEOUS

If you acquired this product in FRANCE, this EULA is governed by the laws of FRANCE.

If this product was acquired outside FRANCE, then local law may apply.

Should you have any questions concerning this EULA, or if you desire to contact Sandor Kovacs for any reason, please contact him/her at the e-mail address mentioned at the top of this EULA or write to his address (also mentioned at the top).

LIMITED WARRANTY

NO WARRANTIES.

Sandor Kovacs expressly disclaims any warranty for the SOFTWARE PRODUCT. The SOFTWARE PRODUCT and any related documentation is provided "as is" without warranty of any kind, either express or implied, including, without limitation, the implied warranties or merchantability, fitness for a particular purpose, or non infringement. The entire risk arising out of use or performance of the SOFTWARE PRODUCT remains with you.

NO LIABILITY FOR DAMAGES.

In no event shall Sandor Kovacs be liable for any damages whatsoever (including, without limitation, damages for loss of business profits, business interruption, loss of business information, or any other pecuniary loss) arise

This license is in effect until terminated by the user or Sandor Kovacs. The user may terminate this license at any time by returning the program together with all copies and merged portions in any form to Sandor Kovacs or place of purchase. The license will terminate if the user fails to comply with any term or condition of this agreement. The user agrees upon such termination to return the program together with all copies and merged portions in any form .

© 2007-2008 Sandor Kovacs. All rights reserved.

LICENSE TERMS APPLICABLE TO TRIAL USE OF EVALUATION VERSION

Sandor Kovacs. grants you a limited license to use this software.

Sandor Kovacs may revoke any permissions granted here, by notifying you in writing.

[Marketing Mail Master :: Contact Us](#)

Visit our site to find latest version. Comments, suggestions, bug reports are all welcome at:

mmm@databasemagic.net

Thanks!